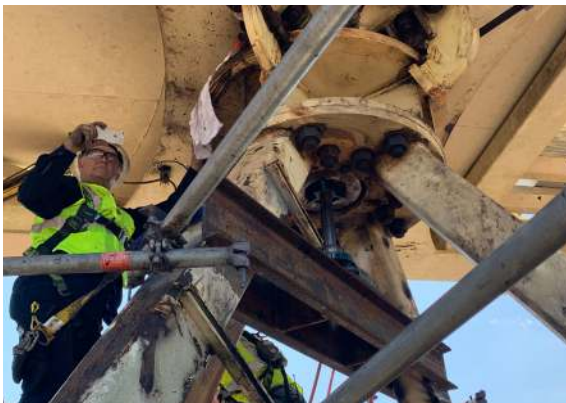


**Industry: Pulp & Paper**

Conhagen repaired a failed bearing and bearing housing on a paper mill crane over 120 feet in the air, preventing the disruption of normal production over Labor Day weekend.



**OBJECTIVE**

Repair a failed bearing and bearing housing on a paper mill crane over 120 feet in the air.

**SOLUTION**

A field boring machine was set up to machine the housing in place. Simultaneously, Conhagen's shop in Kenner, LA started manufacturing a sleeve that would be shipped to field for continuation of the repair.

**RESULTS**

With little advance notice, the Conhagen crew in both the shop and field worked through the Labor Day weekend to complete the repair before Labor Day. The crane is back in service and the mill did not experience a disruption in production.

**TEAM ON THE JOB**

**Shop Supervisor**

Jeff Penton

**Field Machine Supervisor**

Alvin Lott

**Field Machine Crew**

Alfred Serio

Byron Allemand

Gregory Harris